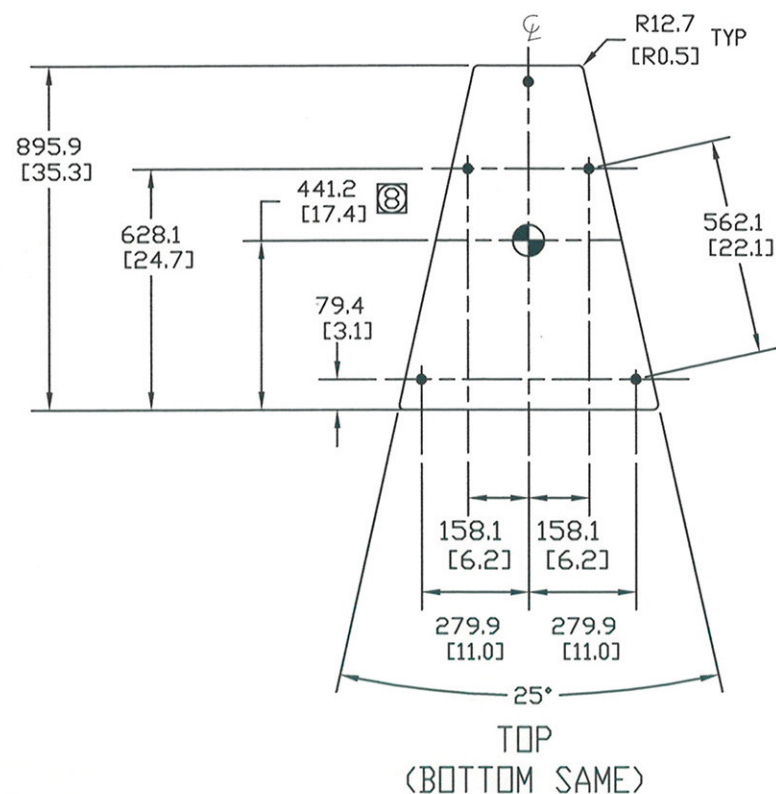
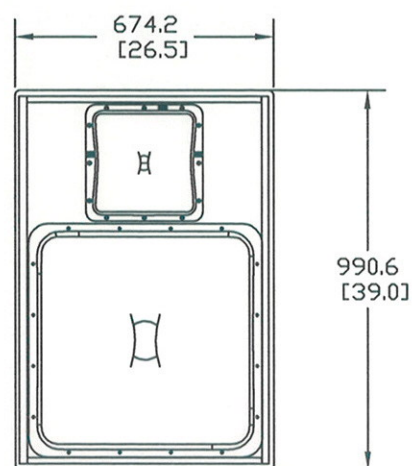


THESE DRAWINGS AND SPECIFICATIONS ARE THE PROPERTY OF JBL INCORPORATED.  
THEY ARE ISSUED IN STRICT CONFIDENCE AND SHALL NOT BE REPRODUCED OR USED  
AS THE BASIS FOR MANUFACTURE OR APPARATUS WITHOUT WRITTEN PERMISSION.

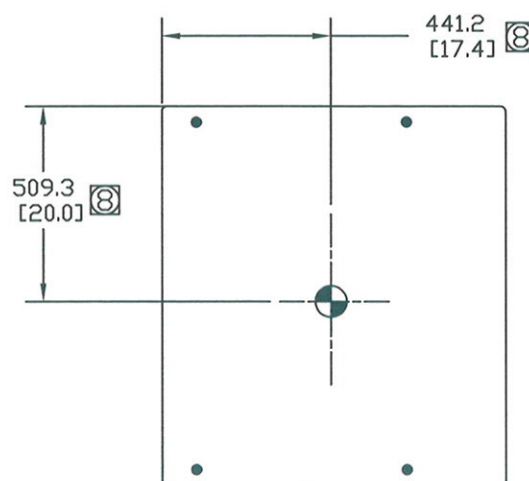
REVISIONS				
CHG	LTR	DESCRIPTION	DATE	APPR
14947	A	RELEASE TO MARKETING	1/30/14	



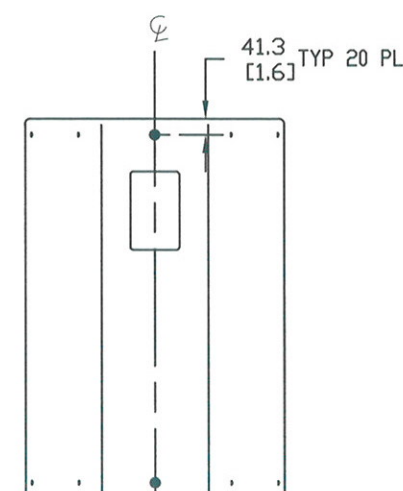
TOP  
(BOTTOM SAME)



FRONT



SIDES



REAR

- COMPONENTS: MF - 1X M222-8A; HF - 1X 2453H
- INPUT CONNECTORS: 4 TERMINAL BARRIER STRIP AND 1X NEUTRK NL4 SPEAKON.
- GRILL: 14 GA. PERFORATED CRS, POWDERCOATED BLACK, BLACK FOAM BACKING.
- MATERIALS: 16MM (5/8") FINNISH BIRCH PLYWOOD.
- FINISH: BLACK DURAFLEX
- SUSPENSION POINTS: " • " 20 TOTAL; 5 EA TOP AND BOTTOM, 4 EA SIDE, 2 REAR; M10 THREAD PATTERN.
- WEIGHT: 71.5 kg (157.6 LBS)

⑧ CENTER OF GRAVITY (CG) ●

NOTES: (UNLESS OTHERWISE SPECIFIED)

TOLERANCES (UNLESS OTHERWISE SPECIFIED)	
XXX	± .063 INCH
XX	± .125 INCH
ANGULAR TOLERANCE OF 0°±30°	
FRACTIONAL DIMENSIONS ± 1/32	
■ DIMENSIONS ARE INCHES	
■ ALL DIMENSIONS ARE FINISHED DIMENSIONS	
■ DO NOT SCALE DRAWING	

JBL PROFESSIONAL A Harman International Company Northridge, California 91329 U.S.A.	
TITLE PD6212/43	
SIZE A	DRAWING NO. 1000131299
SCALE NTS	REV A
SHEET 1 OF 1	